



Executive Metal

The clean, crisp, rectilinear lines of the Executive Metal Collection are sure to appeal to even the most discriminating taste. While at home in virtually any type of office, this collection works particularly well in a traditional office environment.

The line includes a broad range of accessories, each of which is available in a variety of metals and finishes, as shown herein.

Black Linoleum Desk Pad 20" x 34"



- 610001 with Matte Black Painted Steel Side Panels
- 630001 with Satin Brass Side Panels
- 660001 with Mirror Brass Side Panels
- 680001 with Mirror Stainless Steel Side Panels
- 670001 with Satin Stainless Steel Side Panels

Black Linoleum Desk Pad 20" x 38"



- 610051 with Matte Black Painted Steel Side Panels
- 630051 with Satin Brass Side Panels
- 660051 with Mirror Brass Side Panels
- 680051 with Mirror Stainless Steel Side Panels
- 670051 with Satin Stainless Steel Side Panels

Leather Desk Pad 20" x 34"



- 210121XX with Radiused Corners

Leather Desk Pad 24" x 38"



- 210221XX with Radiused Corners

Single Letter Tray 10" x 15" x 2"



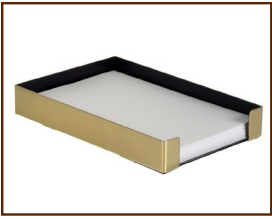
| | |
|--------|------------------------|
| 619900 | Matte Black |
| 639900 | Satin Brass |
| 669900 | Mirror Brass |
| 689900 | Mirror Stainless Steel |
| 679900 | Satin Stainless Steel |

Double Letter Tray 10" x 15" x 6"



| | |
|--------|---|
| 619921 | Matte Black Painted Steel Trays, Matte Black Brackets |
| 639921 | Double Letter Tray, Satin Brass Trays, with Matte Black Brackets |
| 669921 | Double Letter Tray, Mirror Brass Trays, with Matte Black Brackets |
| 689921 | Double Letter Tray, Mirror Stainless Steel Trays, with Matte Black Brackets |
| 679921 | Double Letter Tray, Satin Stainless Steel Trays, with Matte Black Brackets |

Memo Box 4" x 6"



| | |
|--------|------------------------|
| 618701 | Matte Black |
| 638701 | Satin Brass |
| 668701 | Mirror Brass |
| 688701 | Mirror Stainless Steel |
| 678701 | Satin Stainless Steel |

Memo Box 5" x 8"



| | |
|--------|------------------------|
| 618900 | Matte Black |
| 638900 | Satin Brass |
| 668900 | Mirror Brass |
| 688900 | Mirror Stainless Steel |
| 678900 | Satin Stainless Steel |

Single Pen Base 4" x 4"



| | |
|--------|------------------------|
| 618432 | Matte Black |
| 638432 | Satin Brass |
| 668432 | Mirror Brass |
| 688432 | Mirror Stainless Steel |
| 678432 | Satin Stainless Steel |



Double Pen Base 3 1/2" x 8"

| | |
|--------|------------------------|
| 618832 | Matte Black |
| 638832 | Satin Brass |
| 668832 | Mirror Brass |
| 688832 | Mirror Stainless Steel |
| 678832 | Satin Stainless Steel |



Pencil Cup 2 1/2" Diameter x 4"

| | |
|--------|------------------------|
| 618101 | Matte Black |
| 638100 | Satin Brass |
| 668100 | Mirror Brass |
| 268100 | Mirror Stainless Steel |
| 678100 | Satin Stainless Steel |



Clip Cup 2 1/2" Diameter x 1 1/2"

| | |
|--------|------------------------|
| 618200 | Matte Black |
| 638200 | Satin Brass |
| 668200 | Mirror Brass |
| 268200 | Mirror Stainless Steel |
| 678200 | Satin Stainless Steel |



Business Card Holder 3 3/4" x 2 1/4" x 1 3/4"

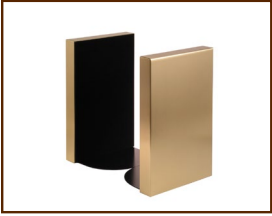
| | |
|--------|------------------------|
| 614500 | Matte Black |
| 634500 | Satin Brass |
| 464500 | Mirror Brass |
| 414500 | Mirror Stainless Steel |
| 679600 | Satin Stainless Steel |



Library Set 1" x 9 3/4" x 1"

| | |
|--------|------------------------|
| 619300 | Matte Black |
| 639300 | Satin Brass |
| 669300 | Mirror Brass |
| 689300 | Mirror Stainless Steel |
| 679300 | Satin Stainless Steel |

Bookends 5 1/2" x 8 1/2"



| | |
|--------|------------------------|
| 619500 | Matte Black |
| 639500 | Satin Brass |
| 669500 | Mirror Brass |
| 689500 | Mirror Stainless Steel |
| 679500 | Satin Stainless Steel |

Waste Receptacle - Round - Without Liner 9" Diameter x 15"



| | |
|--------|------------------------|
| 610900 | Matte Black |
| 630900 | Satin Brass |
| 660900 | Mirror Brass |
| 670900 | Mirror Stainless Steel |
| 680900 | Satin Stainless Steel |

Waste Receptacle - Round - With Liner 9" Diameter x 15"



| | |
|--------|------------------------|
| 610921 | Matte Black |
| 630921 | Satin Brass |
| 660921 | Mirror Brass |
| 670921 | Mirror Stainless Steel |
| 680921 | Satin Stainless Steel |

Waste Receptacle - Round - Without Liner 10" Diameter x 15 1/2"



| | |
|--------|------------------------|
| 615900 | Matte Black |
| 635900 | Satin Brass |
| 665900 | Mirror Brass |
| 675900 | Mirror Stainless Steel |
| 685900 | Satin Stainless Steel |

Waste Receptacle - Round - With Liner 10" Diameter x 15 1/2"



| | |
|--------|------------------------|
| 615921 | Matte Black |
| 635921 | Satin Brass |
| 665921 | Mirror Brass |
| 675921 | Mirror Stainless Steel |
| 685921 | Satin Stainless Steel |

Waste Receptacle - Rectangular - Without Liner 8 3/4" x 12" x 12 3/4"



| | |
|------------|------------------------|
| 470600 | Matte Black |
| 431600 | Satin Brass |
| 461600 | Mirror Brass |
| 411600 | Mirror Stainless Steel |
| 411600-SAT | Satin Stainless Steel |

Waste Receptacle - Rectangular - With Plastic Liner 8 3/4" x 12" x 12 3/4"



| | |
|------------|------------------------|
| 470621 | Matte Black |
| 431621 | Satin Brass |
| 461621 | Mirror Brass |
| 411621 | Mirror Stainless Steel |
| 411621-SAT | Satin Stainless Steel |



Waste Receptacle - 10" Diameter x 13"

| | |
|--------|--|
| 411200 | Seamless Aluminum, Satin Interior & Exterior, Satin Aluminum Rim |
|--------|--|